

The Fairways at Howard's Barn, 16711 County Road 1, Fifty Lakes, MN 56448



The Brainerd Lakes Area is a regional commercial destination for nearly 100,000 year round residents and as many as 150,000 visitors or part-time residents for a total seasonal population of approximately 250,000 people. Baxter is the downtown for the lakes region.

A regional study referenced by the *Brainerd Daily Dispatch* on July 7, 2007 states; “**the Brainerd Lakes Area is forecasted to double its population by 2030**”.

PLEASE
CONTACT



Craig A. Swenson

Commercial Agent

office 218.824.5000

cell 218.821.8998

email craigs@denalicompanies.com

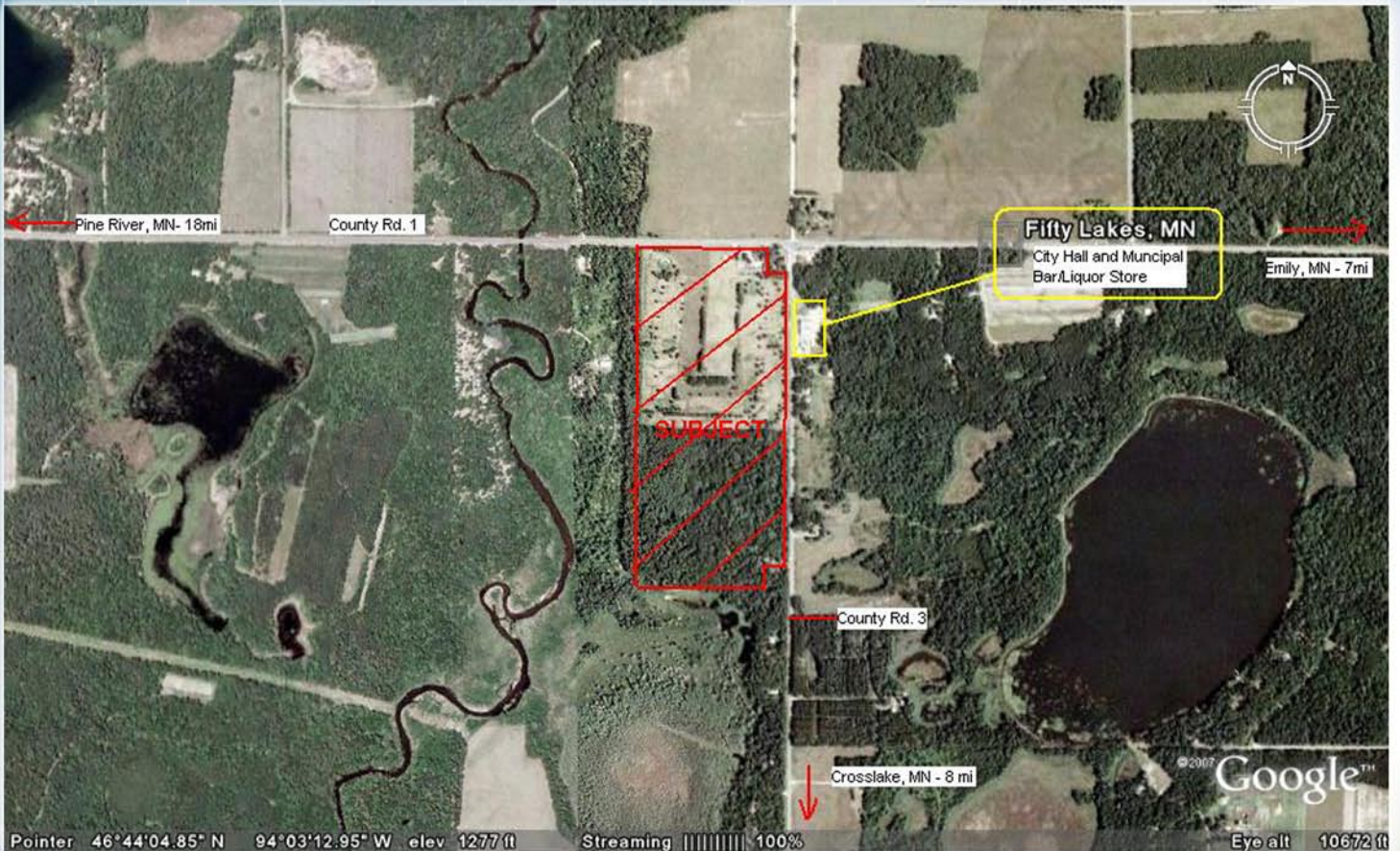


www.denalicompanies.com

DENALI COMPANIES, 13954 Cypress Drive, Baxter, MN 56425

The above information has been obtained from the property owner or other sources that we deem reliable, however, neither the owner nor Denali Companies guarantee the accuracy of such information.

PRIME COMMERCIAL / DEVELOPMENT OPPORTUNITY!



The HISTORIC Howard's Barn

*** OFFERED AT \$865,000 ***

- 78 acre property (39 acres commercial / 39 acres ready for development)
- Operational Full-service bar/restaurant and historic 9-hole golf course!
- Too much new kitchen and grounds equipment to list!
- Oversized Three bedroom/living quarters in the old hayloft
- Located within the expanding City of Fifty Lakes, MN
- High-traffic corner located in the middle of the Lakes and Leisure Area!



office **218.824.5000** | toll free **877.557.1031**

www.denalicompanies.com

DENALI COMPANIES, 13954 Cypress Drive, Baxter, MN 56425

The above information has been obtained from the property owner or other sources that we deem reliable, however, neither the owner nor Denali Companies guarantee the accuracy of such information.